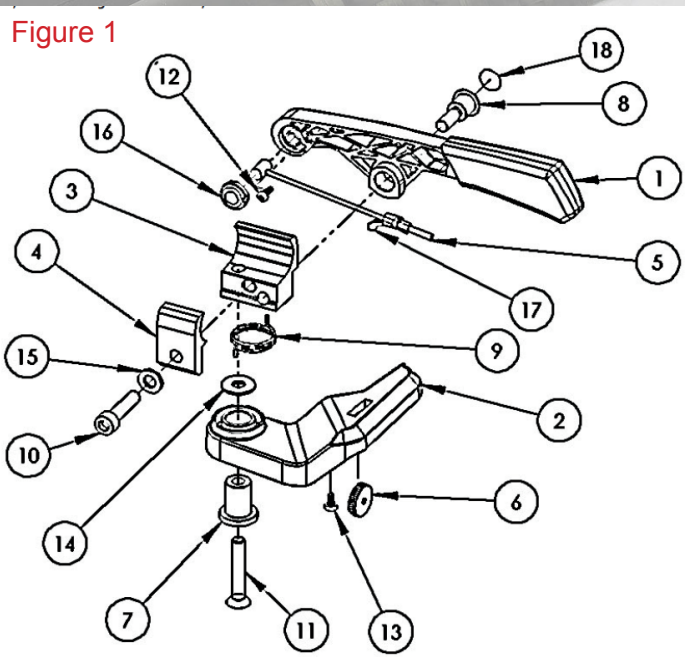


# panthera®

## Assembly instruction

### Wire replacement high brake, New



- 1) Loosen the screws (12) and (13), remove the stop washer (16), loosen the wire from the brake lever (1) loosen the wire from the lever (2) by unscrewing the adjusting ring (6).
- 2) Place the adjusting ring (6) in the locking lever (2), and then attach the wire (5) in the adjusting ring (6). Note! The wire should be installed in the same position as in Figure 1, meaning that the small cylinder at the end of the wire should be parallel to the locking lever (2).
- 3) Then pull the wire protection (17), with the arched tongue outwards pointing toward the cylinder at the other end on the wire as in Figure 2. Make sure the wire protection tongue follow the cable routing in an unbraked position. Press wire protection firmly into the hole on the locking lever (2), make sure the wire protection stays put while you tighten the stop screw (13).
- 4) Then attach the wire (5) the handle (1) using the stop washer (16) and the screw (12). Tighten the screw to the bottom, but not too hard, destroying the thread in the plastic.

Figure 2

