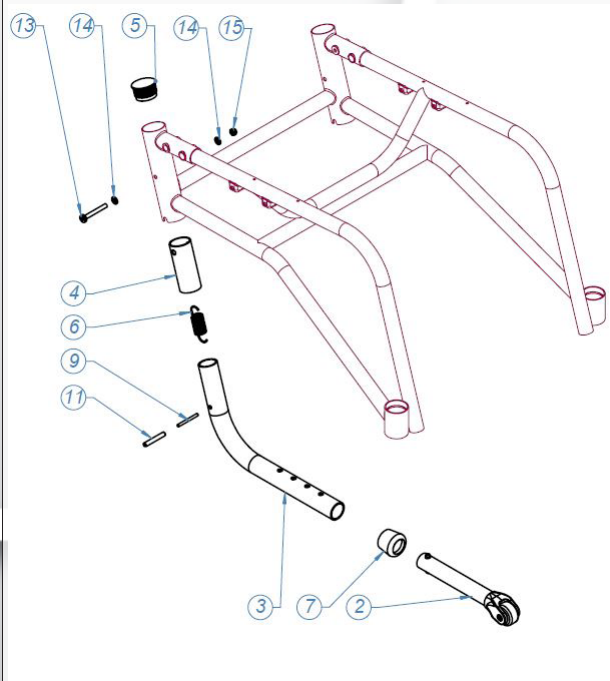


### BAMBINO ANTI-TIP DEVICE



1. Start by screwing on the 'Tip stop bushing' (4) using the screw (13), the two washers (14) and the nut (15).

2. Hook the lower spring (6), as shown in figure 1, in the 'spiral tension pin' (11).

3. Hook the same spring onto the screw (13). You need a long tool for this. Use a spoke or something similar to reach down through the back chassis frame (from above) and hook up the spring onto the spoke, tightening the spring on the screw.

4. Check that the spring is securely in place by pulling the anti tip device, folding it in and out.

5. When everything is securely in place, insert the 'End plug' (5).