

Instructions for assembly High brakes in low assembly position on U2

How to assemble high brakes in low position on U2:

1. When the high brakes are delivered to you they are assembled as shown in figure 1. Before you start to assemble the brakes you should check that the spring (8) is not trapped between the clamp (5) and the spacer (7). If it is trapped, you should reposition the spring round the spacer.

2. Loosen the bolt slightly with the socket head (10) (figure 2) to enable you to place the brake clamps (5 and 6) round the chassis tubing of the wheelchair. (See figure 3).

3. Then try tightening the bolt (10) and move the brake handle (1) forward to brake. The brakes should be adjusted so that they sink into the tyres by around 5mm when in locked position.

- If you feel that the brakes are too loose, push the brake handle backwards and loosen the bolt (10) moving the brake back slightly. Screw in the bolt securely and check that you are satisfied with the braking function.

- If you feel the brakes are too stiff, loosen the bolt (10) and move the brake forwards slightly. Screw in the bolt securely and check that you are satisfied with the brakes.

4. Make sure that the brake locking block (2) is positioned straight against the rear wheel for the best possible braking effect.

5. Repeat the same procedure on the other side.

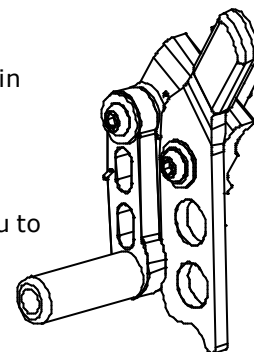


Figure 1

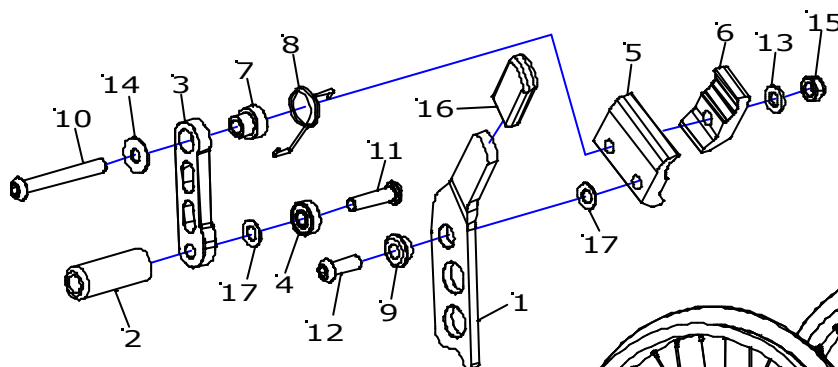


Figure 2

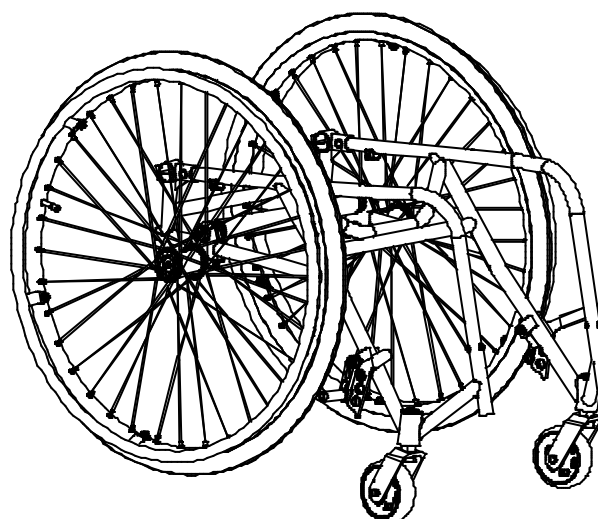


Figure 3