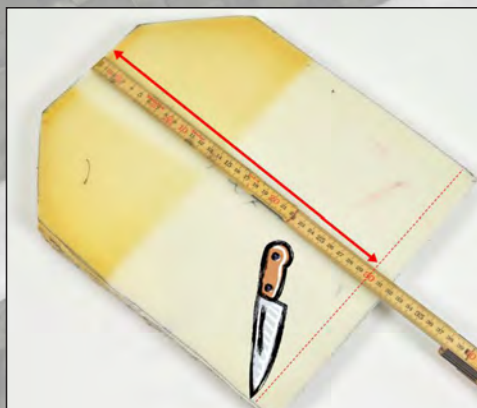


# panthera®

Assembly instruction

## Adapting the the cushion for Bambino / Micro



Sometimes you need to adapt the cushion to the seat depth of the wheelchair for Bambino and Micro. Follow these steps below.



1)  
The cushion seen from top.



4)  
Loosen the strap attached with velcro and pull the cushion out of the cover.



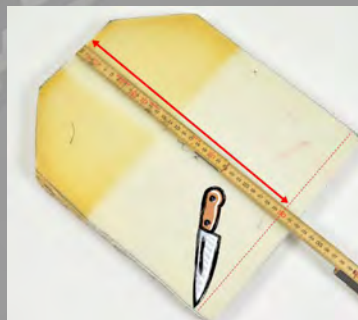
2)  
Turn the cushion up side down and open the flap, attached with velcro.



5)  
Measure the seat depth of the wheelchair.



3)  
Pull out the cushion with cover.



6)  
Apply the same measure to the cushion, starting from the rear and cut with a suitable knife. Reassemble in reverse order.