

Instructions for assembly Sideguards with cover extended

How to assemble your extended sideguards with cover:

1. Check that you have received all the parts on the list below.
2. Start by exchanging the spacers on the nut casings for the enclosed 16mm spacers (the spacer with 3 lines). This is done to move the rear wheel out a little on each side to provide space for the armrest mountings.
3. Loosen the nut (1) in the nut casing (2) as shown in **figure 1**.
 - Unscrew the nut casing and insert the 16mm spacer.
 - Tighten the nut casing
 - Tighten the nut(It is important to do this in the correct order).

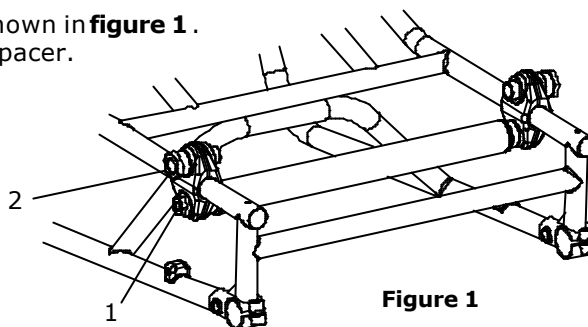


Figure 1

4. Assemble the mountings separately as shown in **figure 2**.
(The upper bolt with the six cornered head should be situated closest to the back on both sides).
5. Push the sideguard down into the mounting. (**Figure 4**)
6. Tighten the bolt with the six cornered head hard and the bolt with the socket head cap loosely.
7. Adjust using the socket head cap so that the sideguard can be easily slotted in and removed. (**Figure 4**)

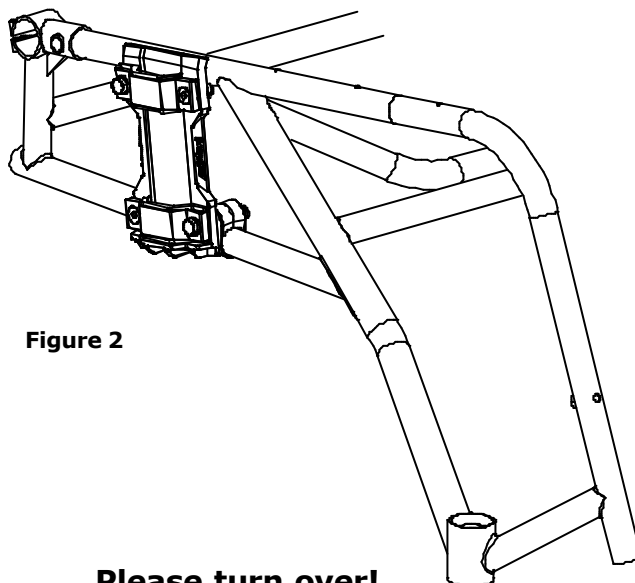


Figure 2

Please turn over!

panthera

Panthera Production AB
Gunnebogatan 26, 163 53 Spånga, Sweden
Tel: +46 (8) 761 50 40 Fax: +46 (8) 621 08 10
panthera@panthera.se www.panthera.se

Instructions for assembly Sideguards with cover extended

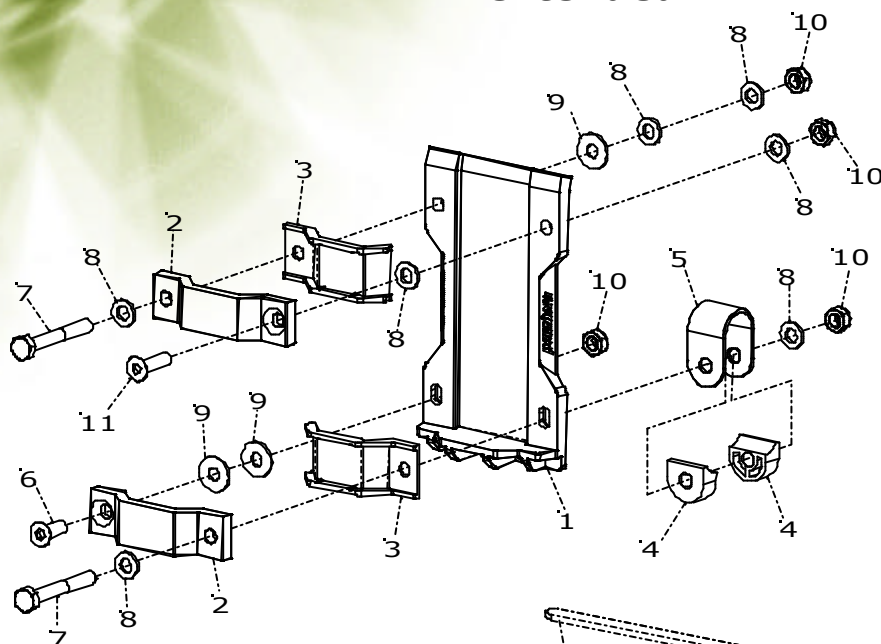


Figure 3

This assembly unit contains:

- 1 Sideguard with cover right, extended
- 1 Sideguard with cover left, extended

- 2 Spacer nut casings 16mm

Details in the enlarged diagram (Figure 3):

- 1. 2 Armrest mountings, plastic
- 2. 4 Armrest mounting clamps
- 3. 4 Armrest bushings
- 4. 4 Mid section armrest clamp
- 5. 2 Reinforcement supports
- 6. 2 Bolts MF6S M6x16 (recessed socket)
- 7. 4 Bolts M6S M6x45
- 8. 14 Washers 6x12
- 9. 6 Washers 6x16
- 10. 8 Locking nuts M6 low
- 11. 2 Bolts MF6S M6x22 (recessed socket)

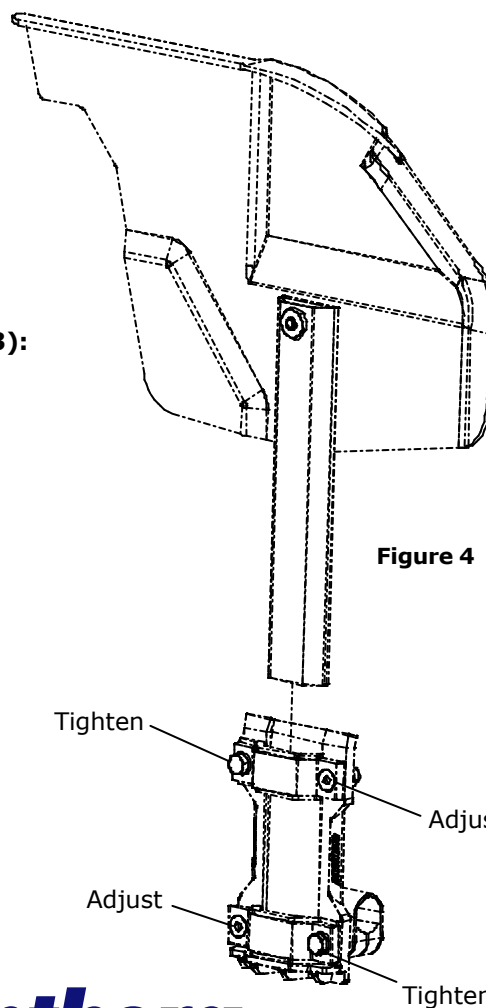


Figure 4